

DOWNTOWN EVERETT ASSOCIATION

The Communicator
Apr May Jun 2009

Volume 4 Number 2

Activities step up the pace as summer approaches

As the weather softens and the days become brighter, our attention is drawn to the many pleasant sights and sounds found in downtown Everett. Below is a montage of pictures depicting the community in which we live, work, and play. Included are a meeting of the Green Drinks group hosted by Coast Real Estate on Rucker, an artwork inside The Sisters Restaurant on Grand, a colorful waiter in a "taco" suit at Gorditos Healthy Mexican Food restaurant on Hewitt, Bob Strickland's Jazz Jam at The Anchor Pub on Hewitt, beautiful glassware at J. Matheson Gifts, Kitchen and Gourmet on Colby, and lovely flowers from several different points downtown.



Inside this issue:

Cruzin' Colby and Show 'n Shine 2

Graffiti control inside/ outside BIA— new graffiti hotline 425-257-8748 2

Clarifying sign regulations in the downtown 3

Downtown Everett development—still moving along 3

Cascade Bank building cleanup 4

Walking tour 4

EPG employee builds special equipment 4

FREE No Trespassing Signs for DEA members 4

City bids reluctant farewell to Karen Shaw

Karen Shaw, a lady that has worn many hats for the City of Everett, is stepping down. Since 2004, Karen has assisted Lanie McMullin as the Director of Economic Development and Human Needs. Karen was instrumental in restructuring the business improvement area (BIA), and she served as the City's representative on the BIA Board of Directors. She is a person of boundless energy and a quick mind. Very organized and articulate, Karen was able to prioritize a long list of responsibilities to achieve success. She will be greatly missed by all who have worked with her. Karen's husband, Don, gives a congratulatory hug. A lovely lavender glass heart was given to Karen — a present from her coworkers.





Cruzin' Colby and Show n' Shine

Everett hosted the 10th great Labor Day weekend Cruzin' to Colby car show sponsored by Seattle Rod-Tiques car club. Fans were treated to the fun-packed Cruzin' Colby on Sunday; on Monday, they experienced the colorful and informative Show n' Shine display of vintage and new vehicles. Elvis and his back-up singer performed for an enthusiastic crowd of thousands. The show broke the record for the largest ever and continued its expansion to include more street space. Visitors enjoyed outside dining, inside dining, and strolling through the vast array of fabulous vehicles.

Graffiti control inside/ outside BIA—new graffiti hotline 425-257-8748

Weed control and graffiti removal are part of the BIA maintenance service for DEA members. Therefore, if you need help inside the BIA boundaries, contact Sue Strickland, 425-258-0700, or Rich Webber, 425-238-7071.



Let's all do our part to keep this blight under control. *Before removal*, take a picture of graffiti and send it along with the location to Sgt. Jim Phillips — jphil



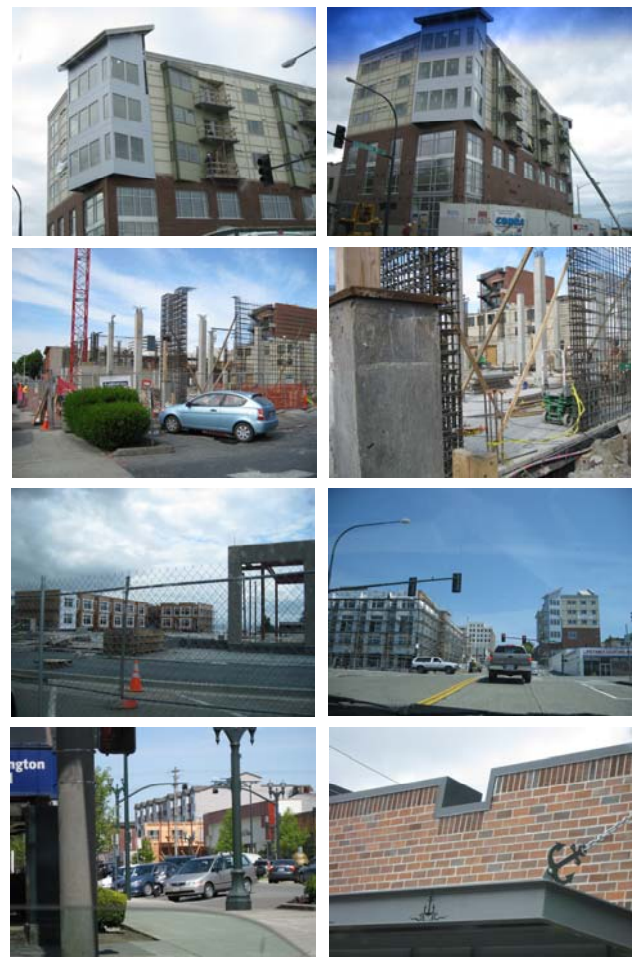
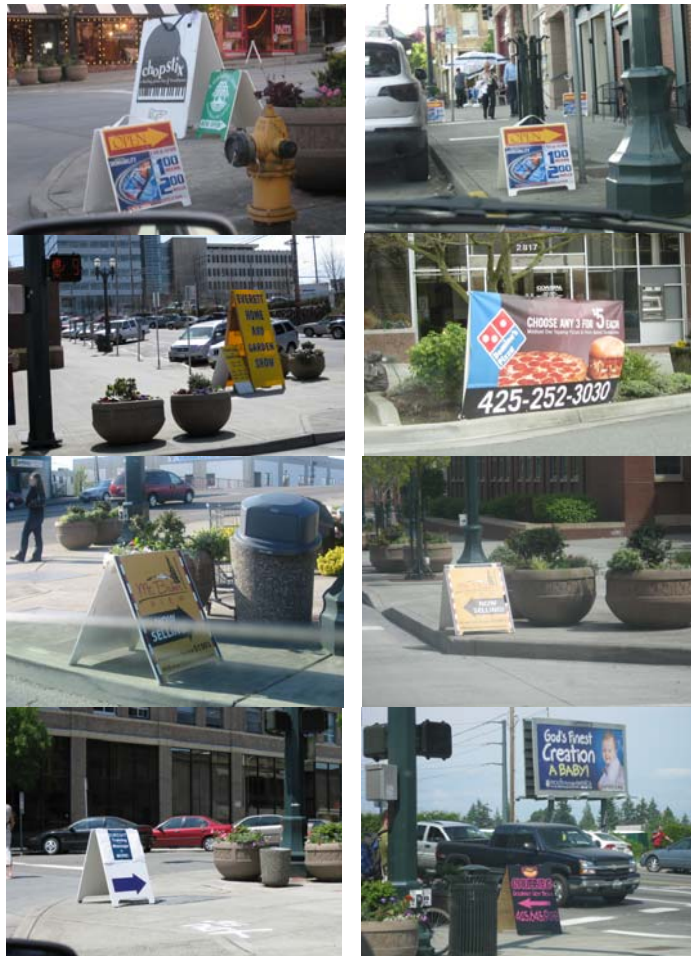


Clarifying sign regulations in the downtown

Many practices of downtown retailers and non-Everett promoters are not in the best interests of beauty or safety in the business improvement area (BIA) and are against City sign codes for the central business district (CBD). Some of these are depicted below as an example of non-conformance with City sign regulations. The first picture shows three signs that are not directly in front of their respective businesses, as called for in City ordinances, and one sign is larger than allowed. The second shows a business displaying three signs – two more than the allowed maximum of one. The third picture shows two signs for the same event, with one being oversized. Also, these signs are in the pedestrian right-of-way. The fourth picture shows a commercial banner attached to a tree on City property. The fifth and sixth pictures show advertisement for apartment rentals, but this sign is several blocks away from the business advertised. The seventh picture shows a sign, again, in the pedestrian right-of-way. The service that it advertises is not identified, and the sign is obviously not directly in front of the business. The eighth picture shows a sign posted at least one block from its business. At the bottom of the right-hand column are two pictures; the one on the left shows posting on the window of a vacant building, while the other shows a hand-drawn yard sale sign placed in a non-residential location.

Downtown Everett development – still moving along

The new Elks Club is taking shape as a very attractive structure at the corner of California and Hoyt (top row of pictures). The new ArtSpace building is rising vertically (second row), as seen from two perspectives on Hoyt. Phase one of Library Place is being finished (row three), as seen from Hoyt and from Rucker. The fourth row begins with a picture of the new Banner Bank building on Colby and 26th. Finally, we see the decorative trim on the overhang and chain supports at the new Anchor Pub on Hewitt.



Sign regulations, continued





P O Box 748
Everett WA 98206

Phone/Fax: 425-258-0700
Cell Phone: 425-876-2158, E-mail:
sue.strickland@downtowneverett.org

Downtown Everett
Live - Work - Play



The Downtown Everett Association (DEA) is committed to advancing and growing Downtown Everett as a vibrant economic, cultural, and governmental center through leadership, advocacy, and the ongoing administration of a business improvement area (BIA). The organization's membership is comprised of property owners who support the revitalization of Everett's historic central core through annual fee assessments. Visit the DEA website for more information.



Sue Strickland
Downtown Services Manager

Cascade Bank building cleanup

Using large mobile escalators, the cleaning crew in these pictures is giving a bright, shiny new look to the Cascade Bank building on Colby and Hewitt.



Walking tour—Visit downtown city-scapes and sculptures, see more on-line at www.ci.everett.wa.us.

Take a walking tour of the lovely art sculptures on Colby from Wall to 26th Street and on Wall, Hewitt and California from Wetmore to Hoyt. Sit in the interesting artwork bench outside of Pave's bakery, pass through the Everett Parking Garage arcade and see the steel sails. Then look at the stacked red cubes that adorn the corner of the Monte Cristo.



There are over 200 **FREE parking spaces** after 6:00 PM and on weekends at the well-lit, easily accessed Everpark Garage at 2815 Hoyt Avenue. *Drive straight in and park.*



All photos for the newsletter are copyright by Sue Strickland.

Newsletters printed by **Evergreen Printing & Graphics**, 10530 19th Ave SE #103, Everett, WA, 425-338-2900.

Everpark Garage employee builds special equipment

Seeing the need for a reel that would hold at least 100 feet of water hose, Wes Stringer, Manager of Maintenance and Security, pictured lower left with birthday cake, built one from individual parts. Thanks, Wes, for being handy and for taking pride in your work. Joe Dillon, one of our hard-working Attendants, is shown below with the fully-loaded hose reel.



FREE
No Trespassing
signs
for DEA members



The DEA Board of Directors elected to provide **FREE** No Trespassing signs to DEA members. The DEA logo appears on the black and white signs. They are available in two sizes, 24"x18" or 18"x12". Contact Sue Strickland at 425-258-0700 to order your signs and make arrangements to pick them up. At that time, she will explain the "no trespass" form to file with the police department.